

**MINERAL**  
**LIFE** **INTL**

Research and Development  
Product Processing  
Sales and Distribution  
Artistic Development  
Since 1986

Lime Paint  
Silicate Paint  
Patina Solution  
Modified Lime Plaster  
Microtopping Admix  
Iron Coating  
Roof Tile Coating  
Stucco Admix  
Anti Corrosive Coating

### Architectural Finishes for:

Exterior and Interior

Walls (plaster, block, precast, tilt up, drywall)

Concrete Floor Slabs

Driveways

Roof Tiles

Patios

Sidewalks

Railings, Gates and Structural Steel

Murals and Ornamentation

Hardscape

Wooden Doors

Sculpture and Monuments

CREATE  
SURFACES  
OF



NATURAL  
CHARACTER

visit us at: [www.minerallife.com](http://www.minerallife.com)  
call us at: (001) 877-407-9510

# **MINERAL LIFE INT'L**

## *Architectural Finishes*

Based on both ancient and modern alchemistries, the beauty of earthen materials is yours with Mineral Life Int'l Architectural Finishes.

Whether you are an architect, painter, artisan, contractor or do it yourself, you can "create surfaces of natural character" for every building surface.

We can supply you with what you need to achieve classic and durable surfaces.

You will discover that our classic earthtone and gemstone materials are always in fashion to complement your imagination.



**MINERAL LIFE INT'L**

Mineral Life Int'l Lime Paint  
with Iron Patina Wash

**LIME PAINT  
SILICATE PAINT  
PATINA SOLUTION**

**MODIFIED LIME PLASTER**

**MICROTOPPING ADMIX**

**IRON COATING**

**ROOF TILE COATING**

**STUCCO ADMIX**

**ANTI CORROSIVE COATING**

**MINERAL LIFE INT'L**

tel: 877-407-9510

[www.minerallife.com](http://www.minerallife.com)

[contact@minerallife.com](mailto:contact@minerallife.com)

Tattoo on Mineral Life Lime Paint



## *Products*

**Lime Paint** An acrylic modified composition of the classical coating with enhanced durability for application to most any building material. The character of natural limestone or color intrinsic concrete



### *Uses*

Can be applied to the following vertical substrates:

1. Precast Concrete
2. Exterior Stucco Plaster
3. Interior Drywall
4. Wooden doors and moldings
5. Reactive with Patina Solutions for antique finishes

### *Advantages*

1. High strength bonding
2. High abrasion resistance
3. Excellent rain and efflorescence resistance
4. Repels water
5. Anti mildew, microbial without chemical fungicides
6. Can be applied over latex paint
7. Elastomeric bridging of
8. Scrubbable
9. "Living Wall" character like Limestone
10. Brightens in color when wet, while maintaining color integrity when dry.
11. May be applied as a Lime Wash by mixing 1:1 with water for variations of tone

**Silicate Paint** allows walls to breathe for a healthy and beautiful quality of this ancient and long lasting paint. Microscopic pores allow the *release of water vapor*

from within the wall, while *repelling the entry of rain water*.

This quality *does not trap moisture and mold* within the wall surface, while *more efficient thermal insulation* is provided to the wall.



Being 97 to 100% *mineral content*, high UV solar radiation does not breakdown Silicate Paint as it does organic latex paints.

Of course, Mineral Life Int'l Silicate Paint has the Classic *Heritage* look with all of the *Classic Earthtone Colors* and *Patina Finishes*.

### *Uses*

Silicate Paint can be applied to the following substrates:

1. Concrete surfaces
2. Lime & Cement Mortar, Stucco / Plaster
3. Brick masonry
4. Old and new lime wash coatings
5. Cellular concrete

### *Advantages*

1. Releases water vapor, while water repellent
2. Non-combustible, acts as fire retardant
3. Highest UV light resistance
4. Natural quality with large selection of earthtone colors
5. Reactive with Mineral Life Patina Solutions for antique finishes
6. Resistant to Acid Pollution
7. Anti allergenic
8. Will not blister or peel
9. Environmentally Friendly



**Patina Solutions** are mineral solutions which are highly reactive with lime containing materials such as concrete, limestone and *Mineral Life Int'l Lime and Silicate Mineral paints and Lime Plaster* surfaces, creating colorful and permanent results on walls, concrete slabs, and precast surfaces.

### *Uses*

*Patina Solutions* are used to create natural and antique coloration to masonry substrate surfaces such as walls, slabs, countertops and precast.

*Patina Solutions* are used in their concentrated form for concrete slab, or as a "Wash" for wall surfaces over color intrinsic Lime and Silicate Paint and Lime Plaster

**Modified Lime Plaster** is a unique formulation with the attributes of polymerized lime and gypsum applied as a ready to use easily spreadable mineral paste. Available in all of the Mineral Life Earthtone colors as well as custom color matching. Antique finishes can be accomplished by the application of Patina Solution or Wash over the Lime Plaster surface.

### *Uses*

Modified Lime Plaster may be applied to the following vertical surfaces:

1. Exterior or interior plaster or stucco
2. Cellular Lightweight concrete
3. Drywall
4. Durock, Denshield or Wonderboard
5. CBS Block
6. Precast Concrete



### *Advantages*

For concrete slabs:

1. Beautiful, natural finish, unique, like stone
2. Cost effective, competitive in price with most all floor coverings
3. Can be customized with score cutting and multi chromatic designs
4. Can be combined with diamond polishing and densifiers for high traffic commercial spaces such as mega stores, hotel lobbies and airport terminals.

For wall finishes:

1. Can antique any concrete surface
2. Real mineral finish (no faux)
3. Can be applied full strength or as an accent "wash".



### *Advantages*

1. Easy application—no mixing
2. Dries and sets quickly
3. Covers unwanted wall texture
4. Creates natural looking smooth or textured finish
5. Large color selection
6. Reactive with Patina Solutions for antique colors
7. Can be applied over previously painted latex emulsion finishes
8. Excellent water and mildew resistance—may be used for shower walls
9. "Living Wall" character like stone.



## **MICROTOPPING ADMIX**

An emulsion of the highest quality Acrylic Polymer, Inorganic Colorants and concentrated rheological agents which allow Portland Cement to be modified for use as a thin, hard, durable microtopping over concrete slab surfaces.

### *Uses*

1. May be applied over interior slabs, patios, as well as concrete driveways and pathways.
2. Interior applications may be sanded and polished for brilliant surfaces.
3. May be applied to resurface and beautify swimming pool decks and plaster surfaces.
4. May be applied to vertical wall surfaces for ultra hard steel trowel finish.
5. May be applied over wood or concrete counter-tops for superior wearable finish.

**IRON COATING** is a decorative finish for Iron resurfacing of lime containing masonry surfaces.

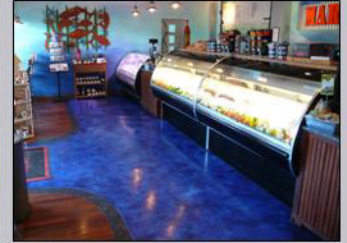
Iron Coating is a spreadable composition of 100% pure elemental iron which chemically bonds upon drying.

Iron Coating is more stable than steel; does not scale or deteriorate from exposure because it is free of contamination which exists in modern steel alloys.

### *Uses*

Mineral Life Int'l Iron Coating may be applied to the following vertical substrates as a decorative resurfacing finish:

1. Concrete
2. Stucco
3. CBS Block
4. Mineral Life Int'l Lime Paint
5. Materials primed with Lime Paint, such as: Drywall, Durock, Wood, Plastic, etc.



### *Advantages*

1. Large choice of Classic Earthtone Colors with the option of Mineral Life Int'l Patina Wash finishes.
2. Most cost effective topping system.
3. Choice of finishing tools for different surfaces.
4. May be customized with score cutting and multi-chromatic designs.
5. Can be applied over stencils for artistic designs.
6. Microtopping may be sanded and polished to a high luster.



### *Advantages*

1. Natural iron surface without fabrication
2. Basic application equipment required
3. Bonds permanently to masonry surfaces
4. Stable for exterior use

## CLASSIC EARTHTONE COLORS



Dune



Straw



Seashell



Palm Trunk



Clay



Fennel



Sea Foam



Sky



Horizon



Fool's Gold



Ochre



Yellow Oxide



Sunflower



Bronze



Olive Bronze



Red Earth

All representations of color samples have been reproduced from actual samples, however, we cannot guarantee that the color accuracy of the image on your monitor or print is within an acceptable range for all colors. Color Samples may be confirmed with an actual paint color sample from the customer's invoiced order selection for approval.



## CLASSIC EARTHTONE COLORS



Iron Oxide



Cherokee Red



Adobe



Bamboo



Apple Green



Rosemary Green



Stucco Gray



Lotus



Grape



Red Oxide



Burnt Umber



Bone



Coconut Husk



Graywood



Indiana Limestone



Thistle

All representations of color samples have been reproduced from actual samples, however, we cannot guarantee that the color accuracy of the image on your monitor is within an acceptable range for all colors. Color Samples may be confirmed with an actual paint color sample from the customer's invoiced order selection for approval.



## PATINA WASH ON CLASSIC EARTHTONES



Natural White with  
Iron Patina Wash



Clay with  
Iron Patina Wash



Mineral Green Patina  
Wash on Clay



Sunflower with  
Iron Patina Wash



Red Earth with  
Iron Patina Wash



Apple Green with  
Iron Patina Wash



Coconut Husk with  
Iron Patina Wash



Lotus with  
Iron Patina Wash



Cherokee Red with  
Iron Patina Wash



Graywood with  
Iron Patina Wash



Burnt Umber with  
Iron Patina Wash



Red Oxide with Iron  
Patina Wash

All representations of color samples have been reproduced from actual samples, however, we cannot guarantee that the color accuracy of the image on your monitor or print is within an acceptable range for all colors. Color Samples may be confirmed with an actual paint color sample from the customer's invoiced order selection for approval.

## PATINA WASH ON CLASSIC EARTHTONES



Thistle with Iron  
Patina Wash



Iron Patina Solution  
on Natural White



Bronze Patina Solution  
on Natural White



Malachite Patina Solution  
On Natural White



Turquoise Patina Solution  
on Natural White



Turquoise Patina Solution  
on Lt Stucco Gray



Ebony Patina Solution  
on Natural White



Mineral Green Patina Solution  
on Natural White



Lt. Palmtrunk with  
Iron Patina Wash



Evergreen with  
Iron Patina Wash



Grape with  
Iron Patina Wash



Ebony Patina Wash over  
Mineral Green Patina  
Solution over White

All representations of color samples have been reproduced from actual samples, however, we cannot guarantee that the color accuracy of the image on your monitor or print is within an acceptable range for all colors. Color Samples may be confirmed with an actual paint color sample from the customer's invoiced order selection for approval.



## PATINA SOLUTION COLORS ON CONCRETE SLAB



Ebony



Tortoise Shell



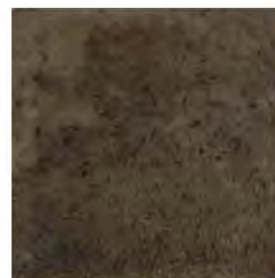
Cola



Antique Bronze



Golden Bronze



Brown Agate



Iron



Mineral Green



Malachite



Jade

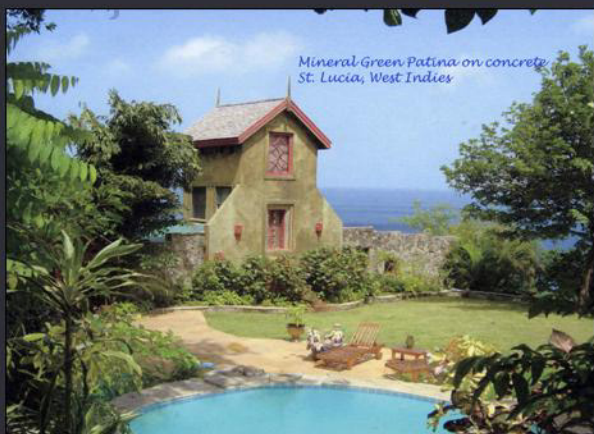


Turquoise



Brass

All representations of color samples have been reproduced from actual samples, however, we cannot guarantee that the color accuracy of the image on your monitor or print is within an acceptable range for all colors. Color Samples may be confirmed with an actual paint color sample from the customer's invoiced order selection for



Mineral Green Patina on concrete  
St. Lucia, West Indies



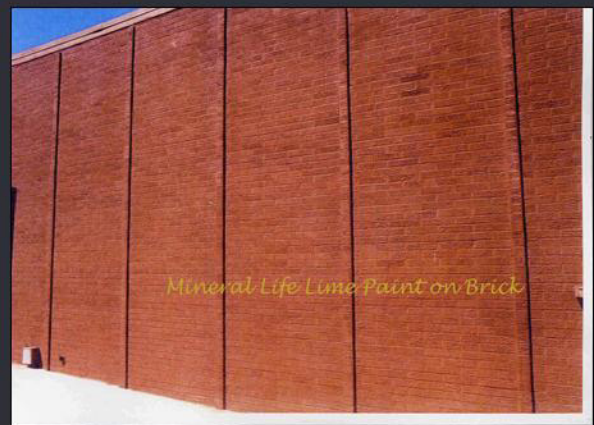
Iron Patina Wash over "Mamey" Lime Paint



Mineral Life Patina on concrete slab



Mineral Life Int'l  
Silicate Waterglass Paint over Lime Plaster



Mineral Life Lime Paint on Brick



Mineral Life Int'l Lime Paint with Iron Patina Wash  
Veranda Park, Orlando, FL



Mineral Life Lime Paint on stucco wall



Modified Lime Plaster





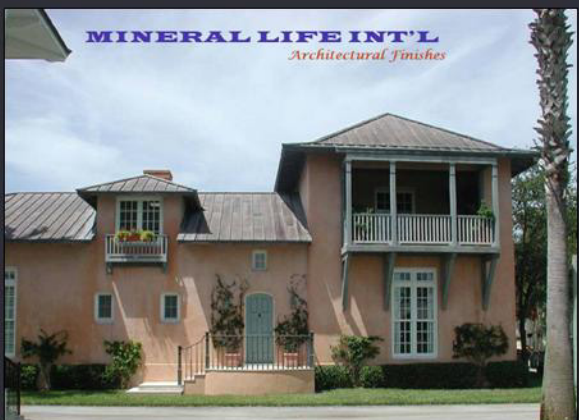




Bronze Patina on Slab



Mineral Life Patina on precast concrete wall



**MINERAL LIFE INT'L**  
Architectural Finishes



Mineral Life Intl  
Micro-topping with Iron Patina Wash



Iron Patina Solution on Concrete Slab



Iron Patina on pool deck



MINERAL LIFE BRONZE PATINA ON MODIFIED CEMENT TOPPING



